

NORRKÖPING/Kungsängen

ILS or LOC RWY 09

KUNGSÄNGEN TOWER	120.355
ÖSTGÖTA APPROACH	132.955

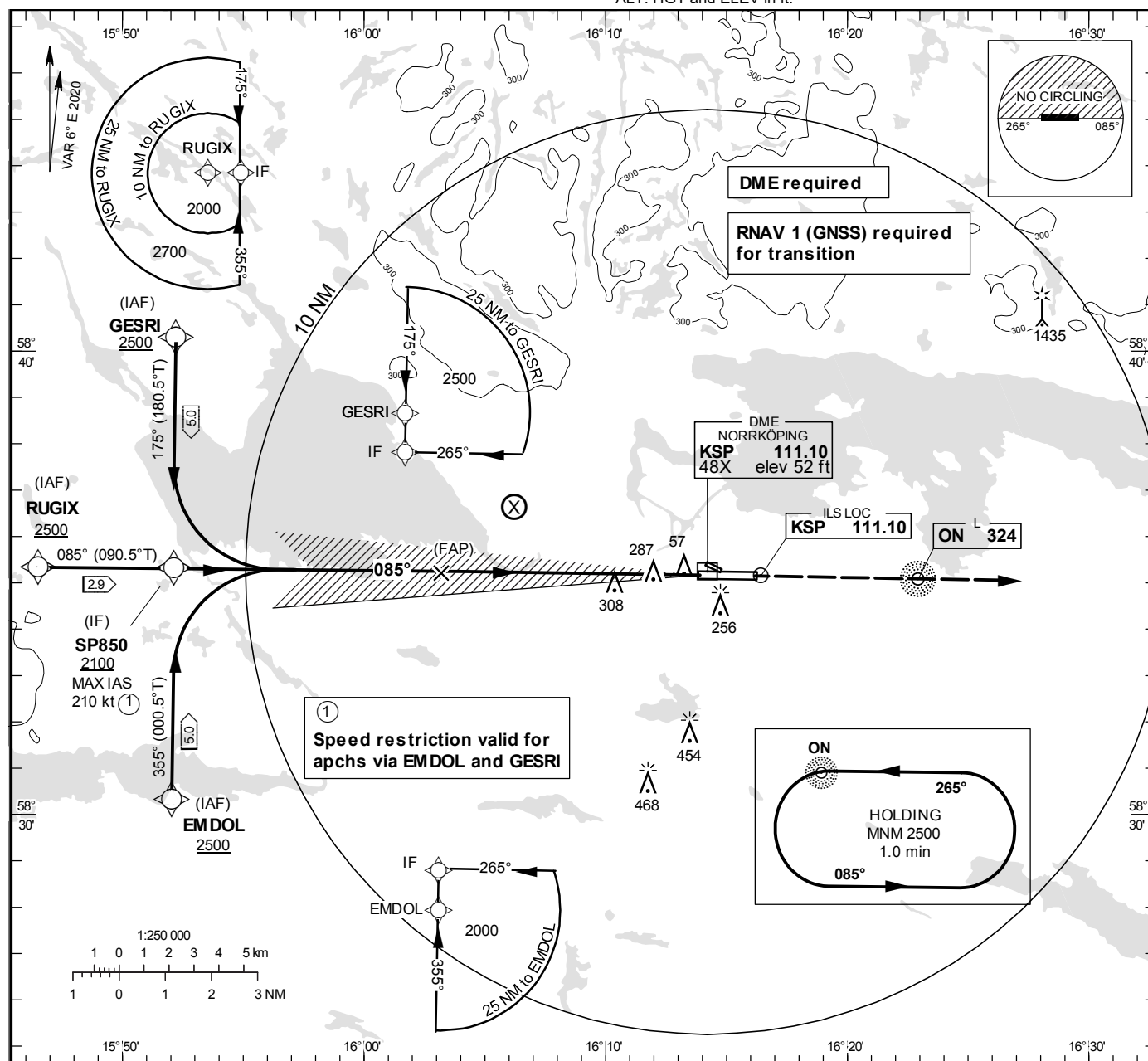
THR ELEV 13.3 ft, AD ELEV 32 ft

OCH are related to THR.

Circling OCH are related to AD ELEV.

BRG are MAG

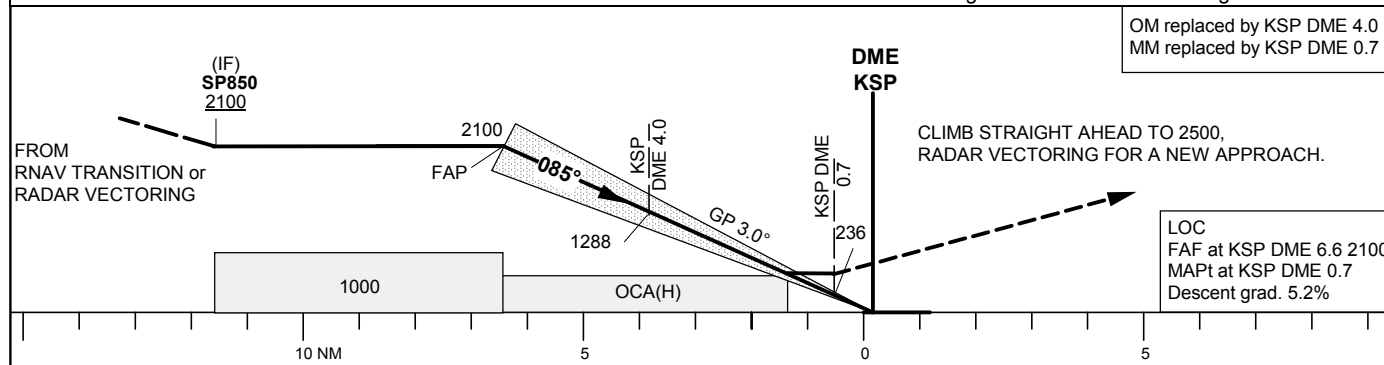
ALT, HGT and ELEV in ft.

INSTRUMENT
APPROACH
CHART – ICAO

TA 5000 ft AMSL

RDH 50.9 ft

* Timing not authorized for defining the MAPt



OCA (H)					Final approach					
Cat of ACFT	A	B	C	D	DME KSP NM	6	5	4	3	2
Straight-in Approach	CAT I	165 (151)	173 (159)	184 (170)	194 (180)	ALT	1930	1610	1290	970
LOC		540 (530)				GS	kt	80	100	120
Circling S RWY		560 (530)	620 (590)	860 (830)	880 (850)	Time	min:s	4:24	3:31	2:56
						Rate of descent	ft/min	425	530	635

CHANGE: Editorial